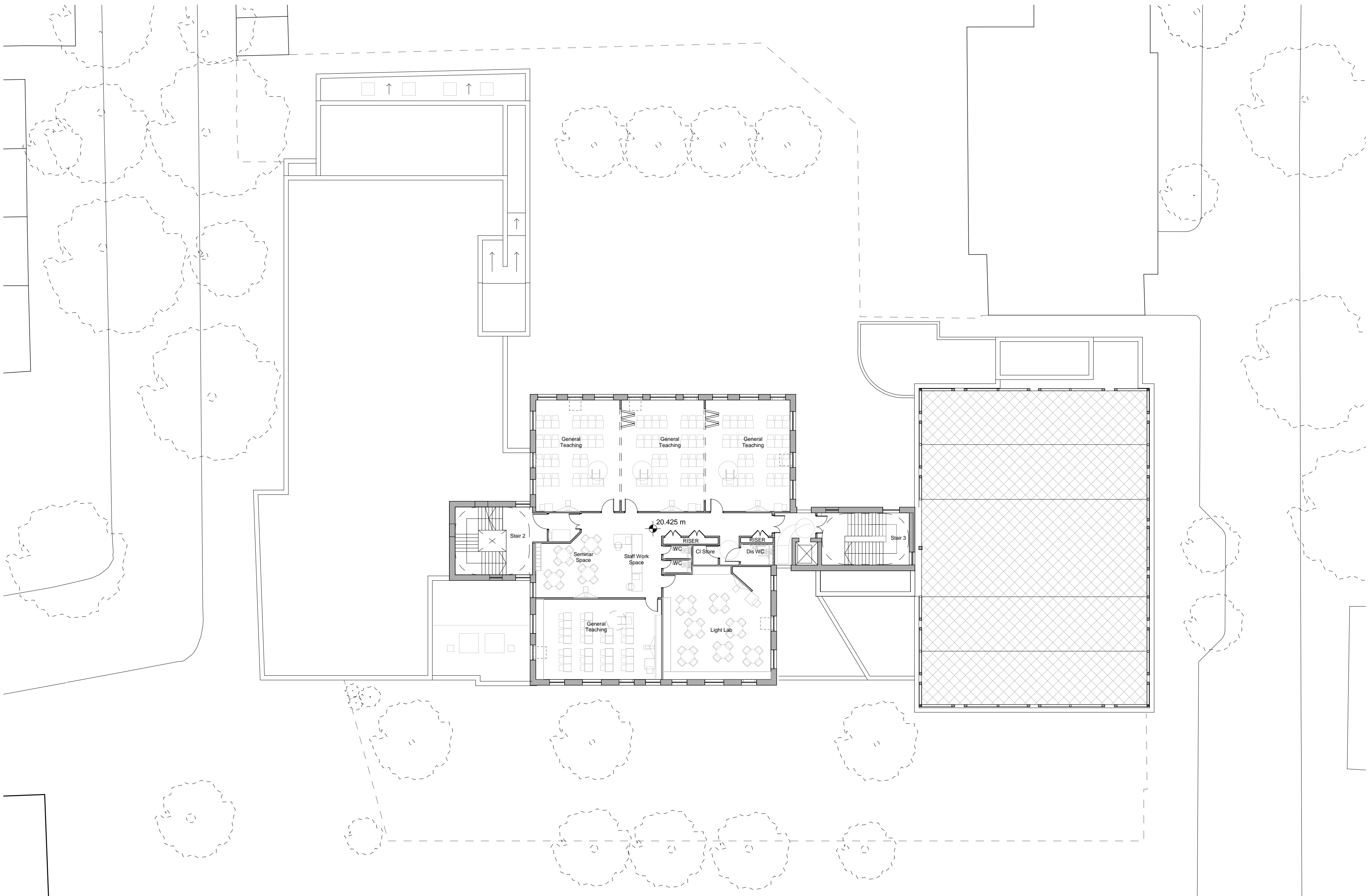


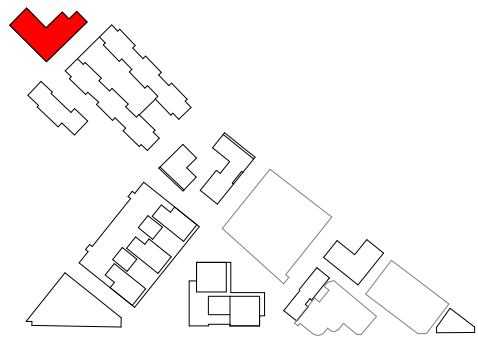
Fourth Floor Plan



Fifth Floor Plan

1:200 0 1 5 10 m

Key Plan



#### REVISIONS

No.	Revision	Date
A	Addendum	January 2018

COTTRELL & VERMEULEN ARCHITECTURE	1B Iliffe Street London SE17 3LJ 0207 708 2567 Client: Grosvenor Britain & Ireland	N
2607-CVA-BC01-XX-DR-PLN-A-0103	A	
0381: The Bermondsey Project School		
4F/5F Plan as Proposed		
Scale: 1:200 @ A1		October 2017
Drawn by: HH		Checked by: RC
Filename: 0381_CURRENT		Do not scale from this drawing Confirm all dimensions on site